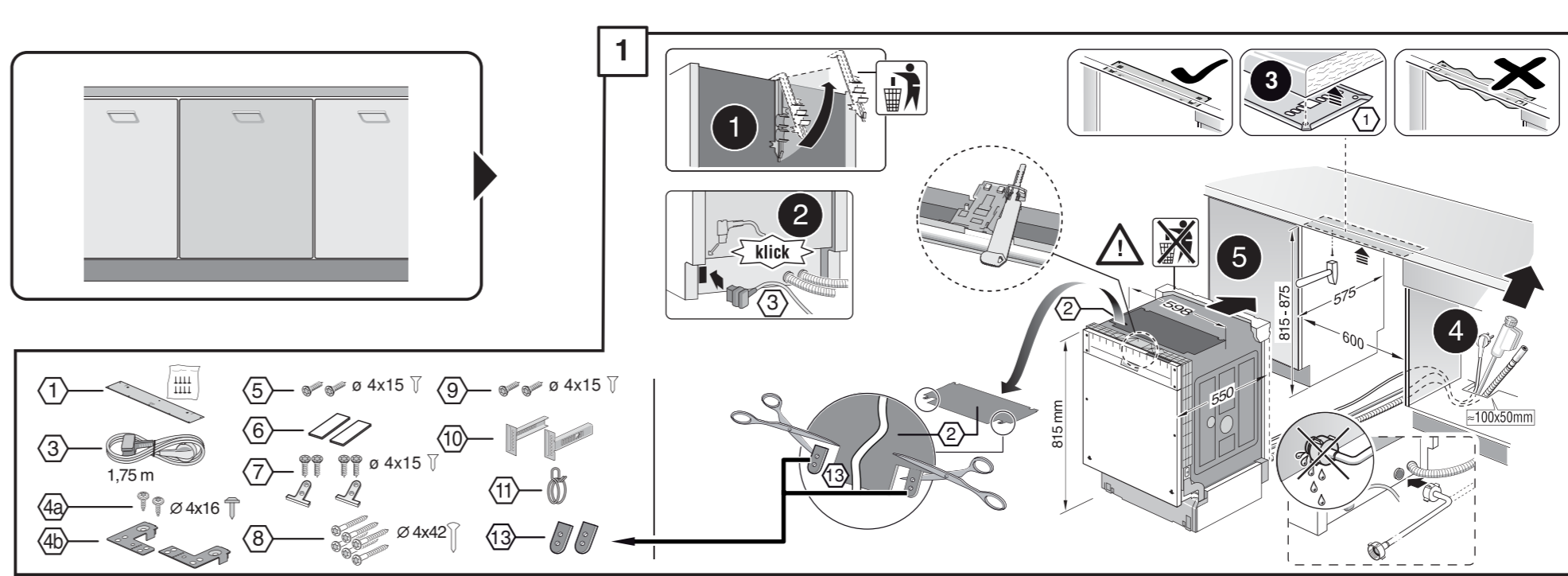


GV 640 B Voll-I - 81,5 cm - k-SW mit GS9001 170 055 (9812)

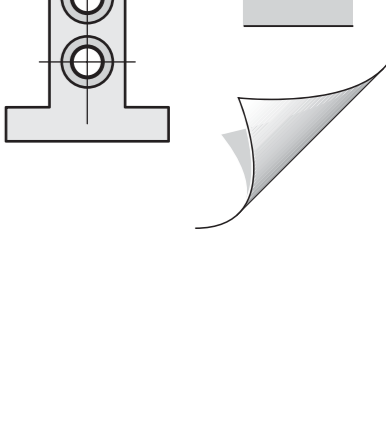
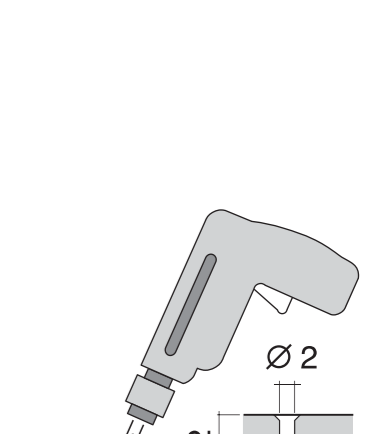
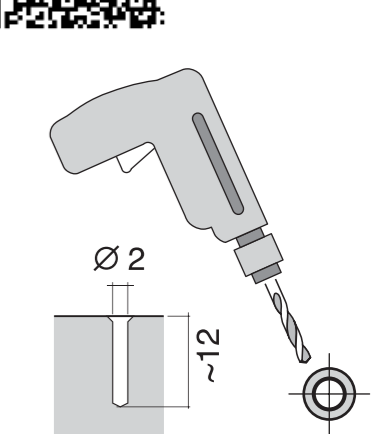
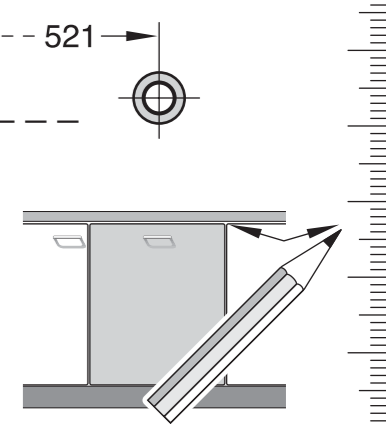
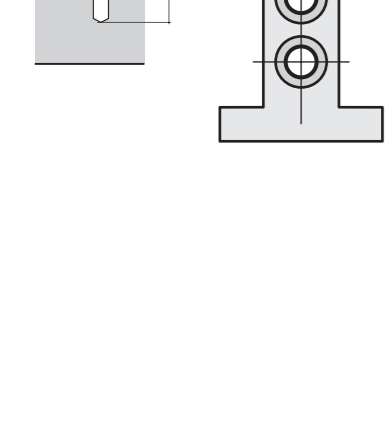
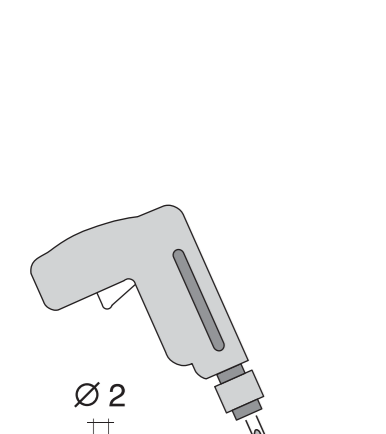
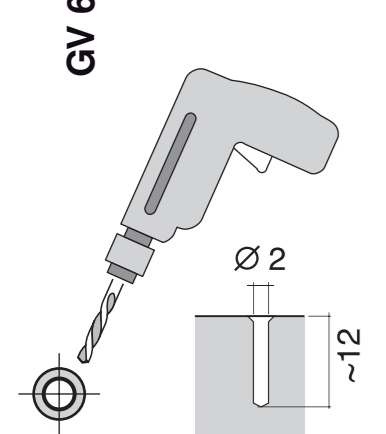
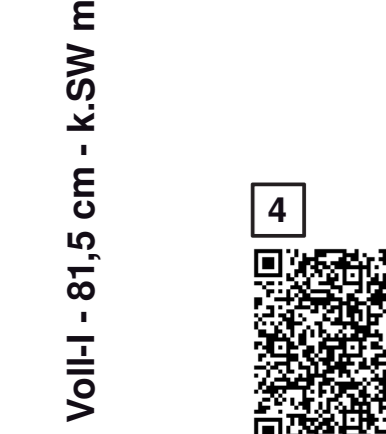
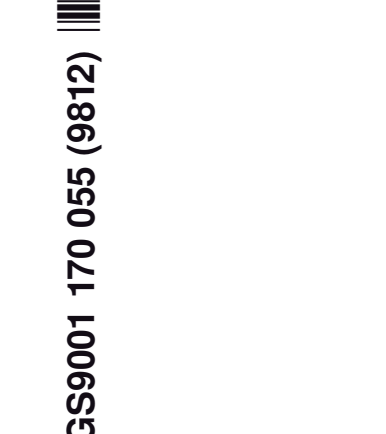
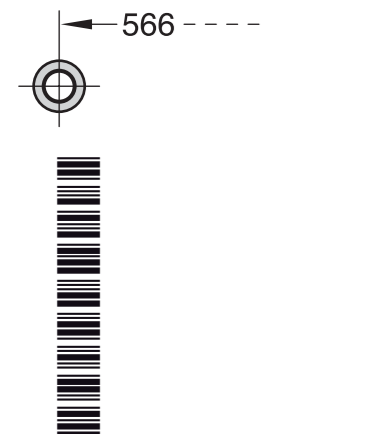
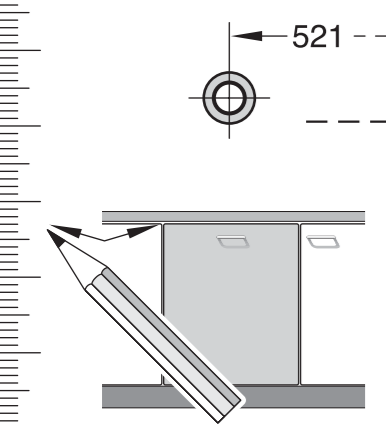
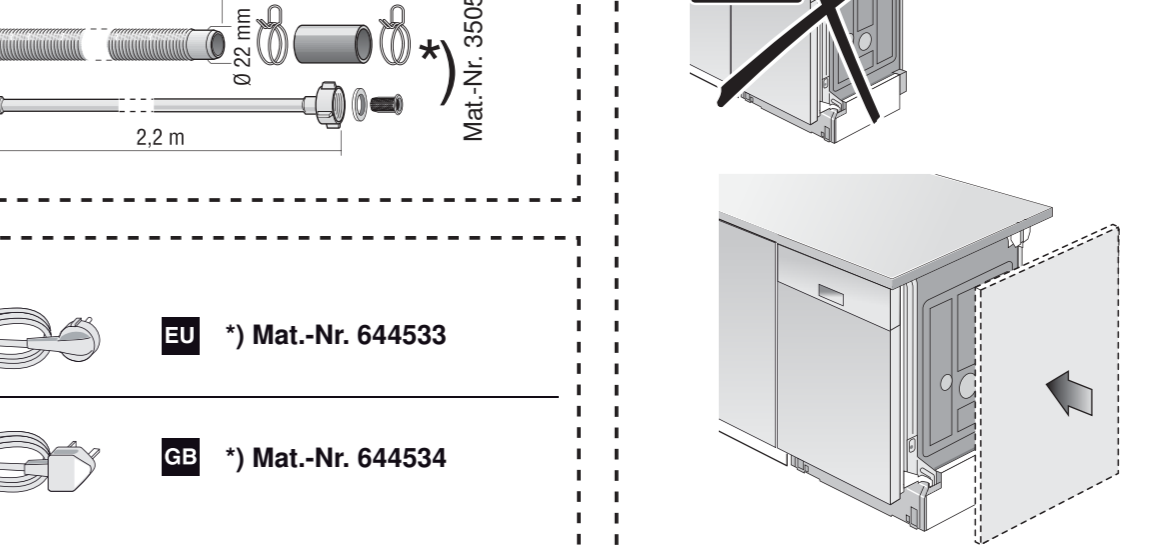
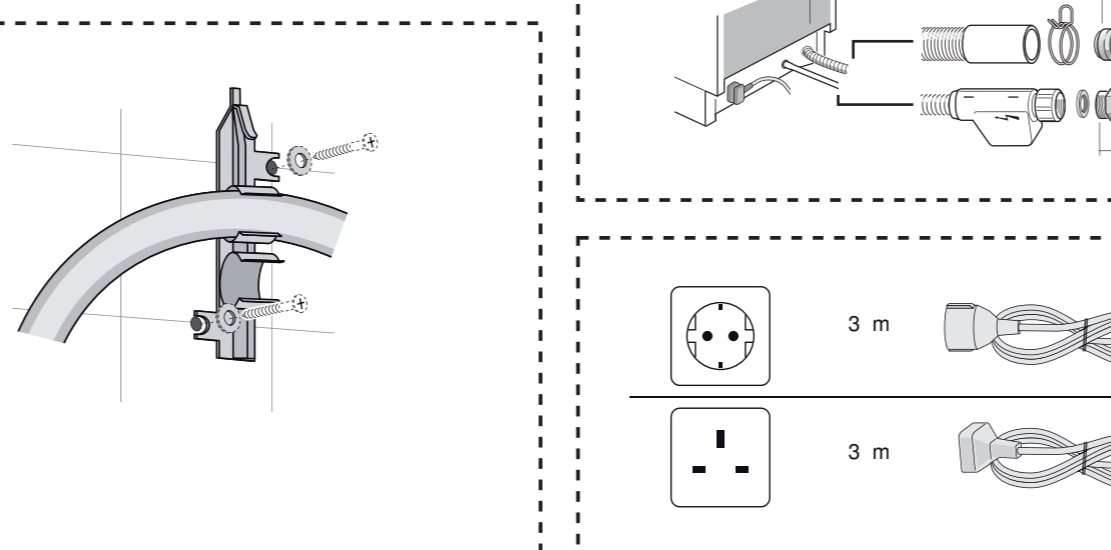
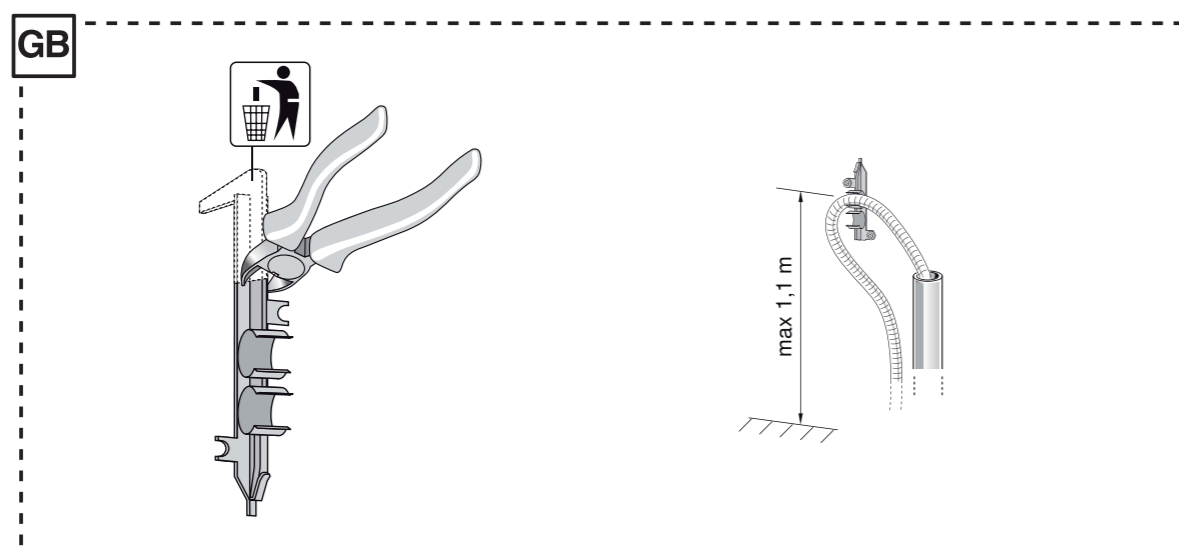
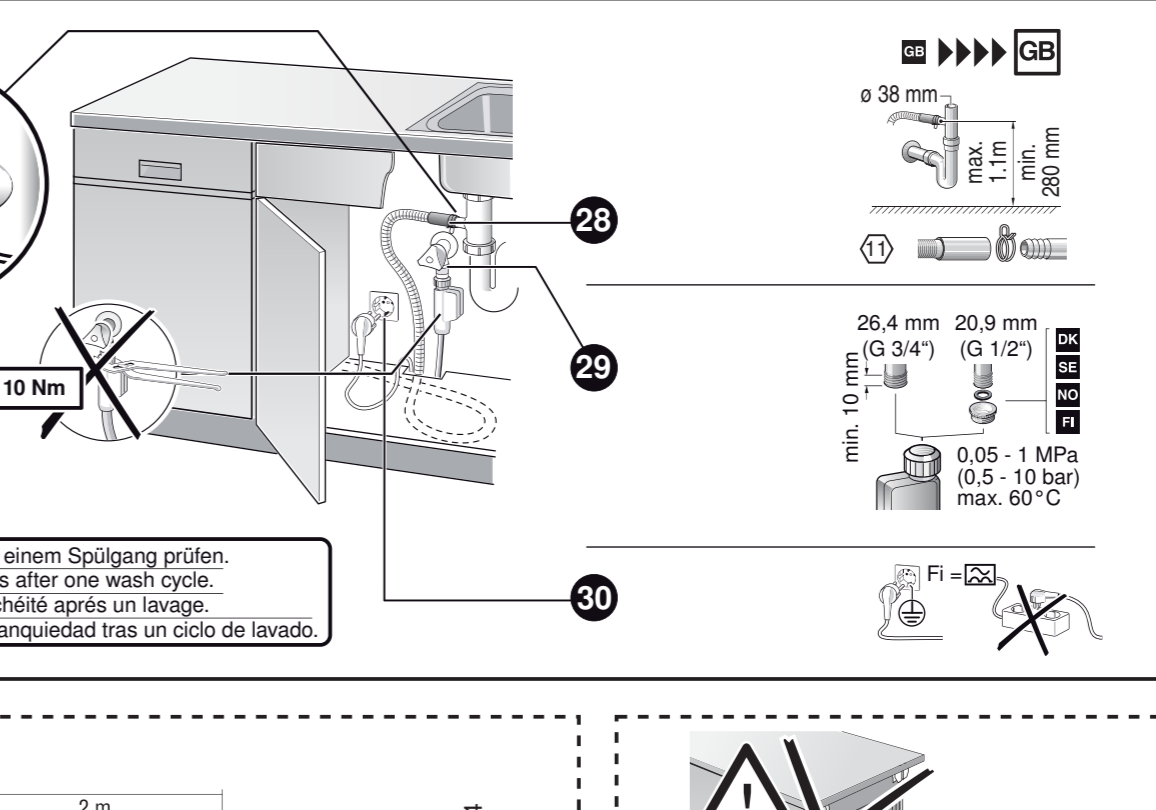
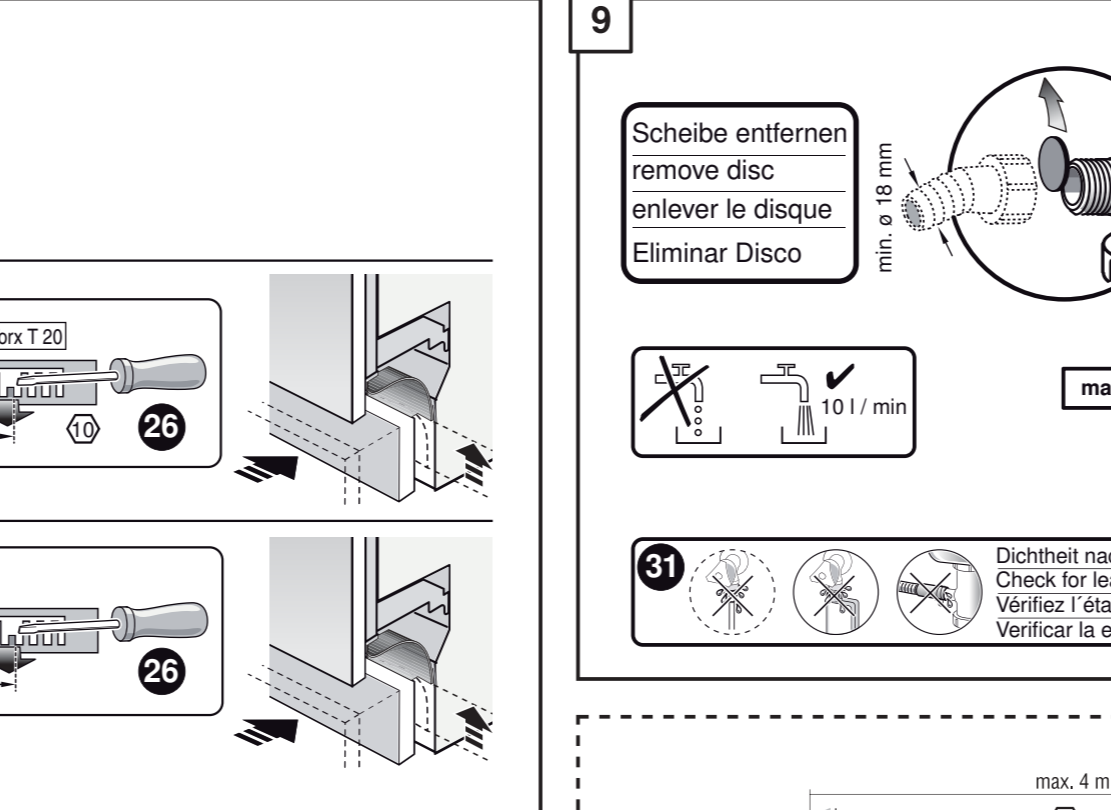
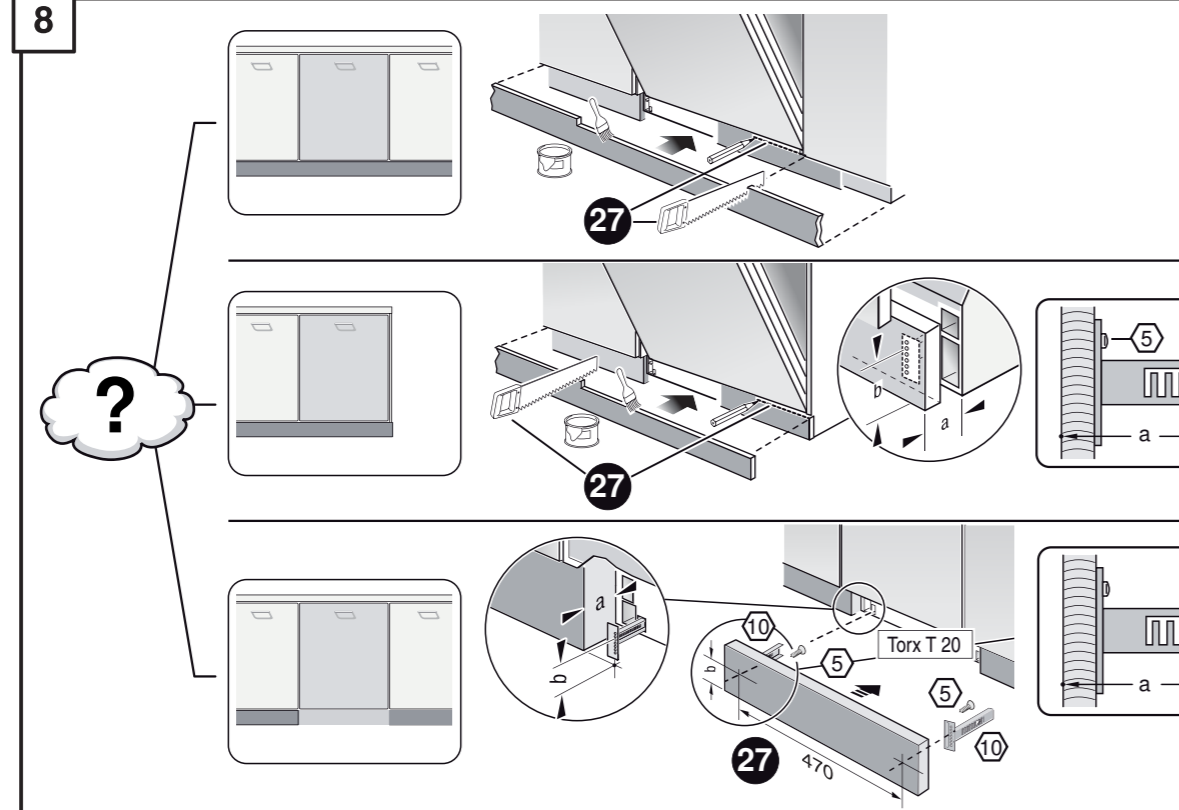
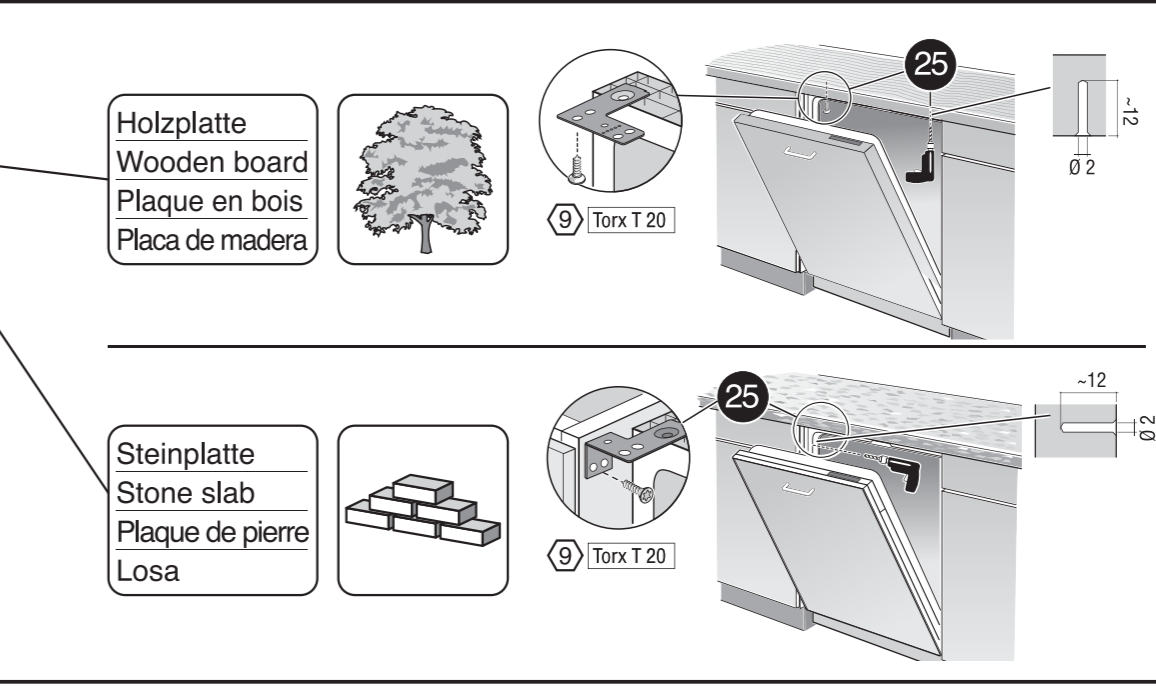
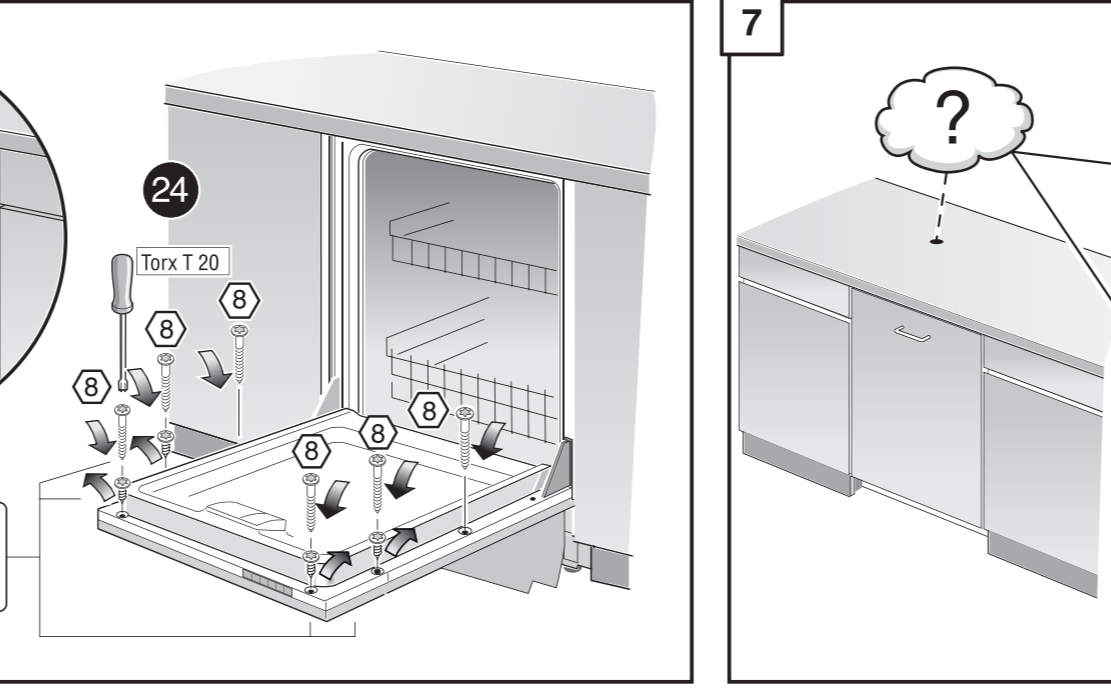
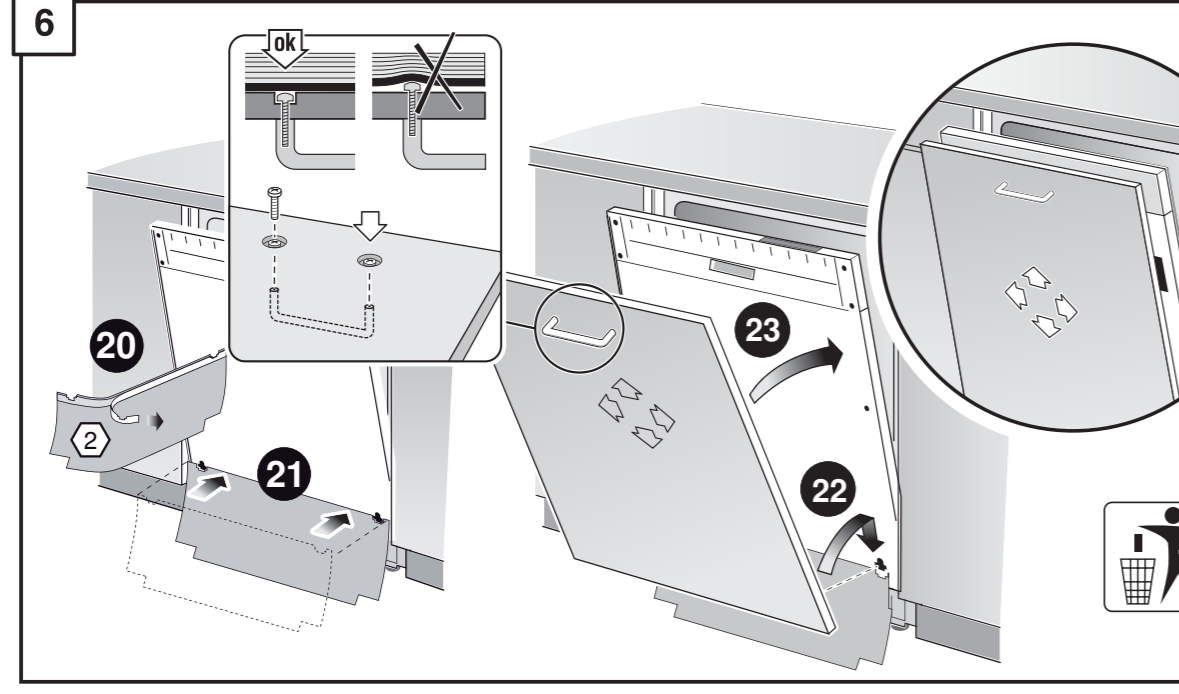
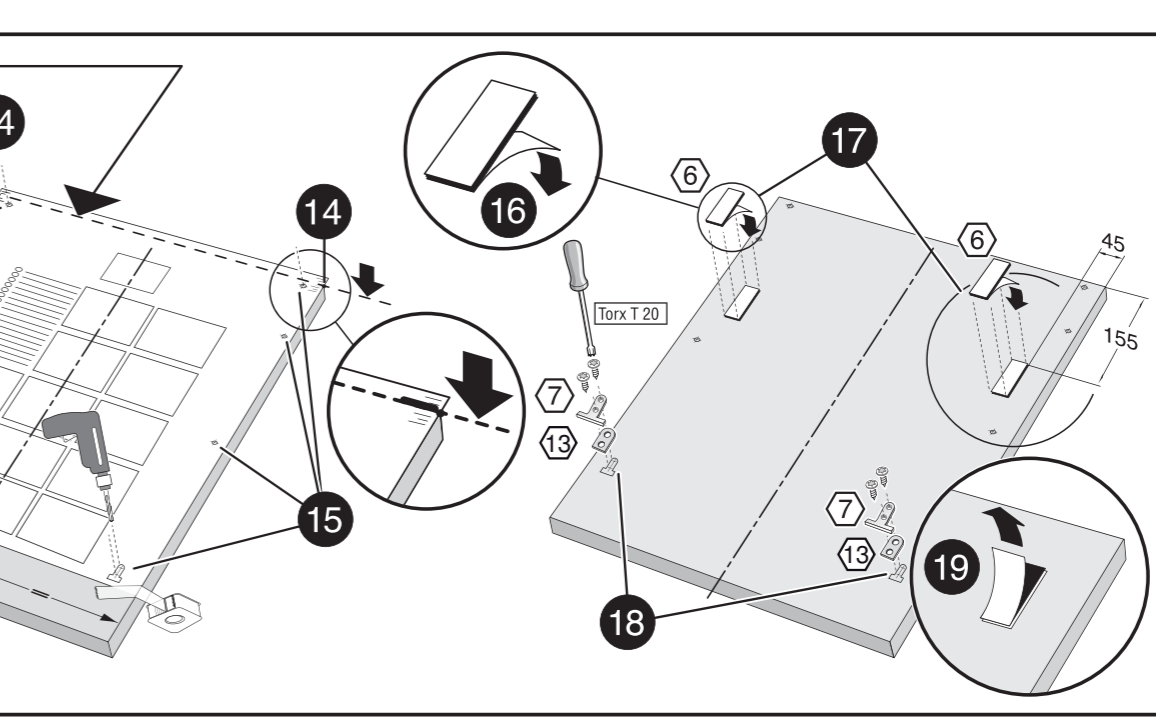
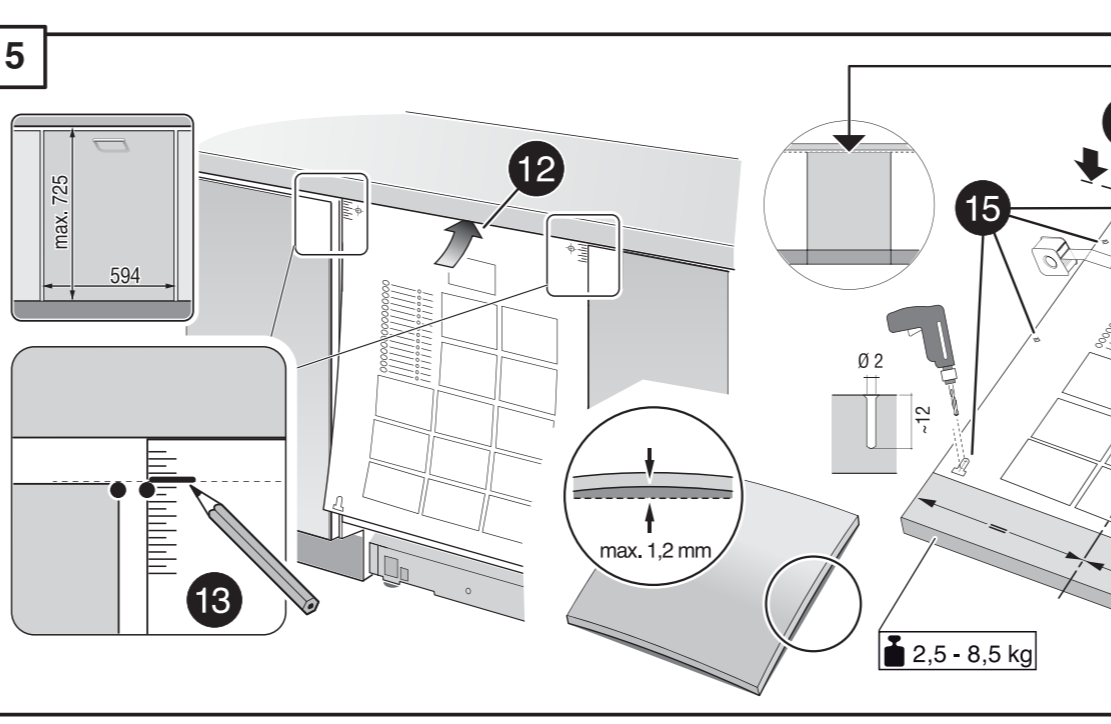
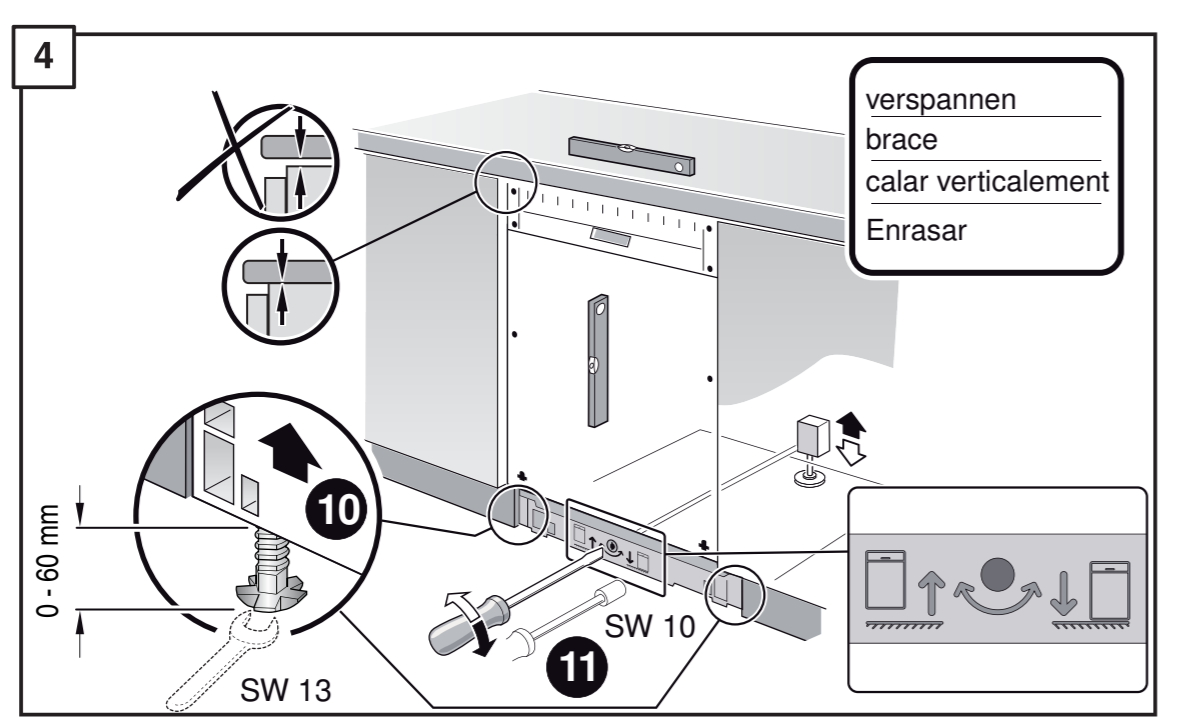
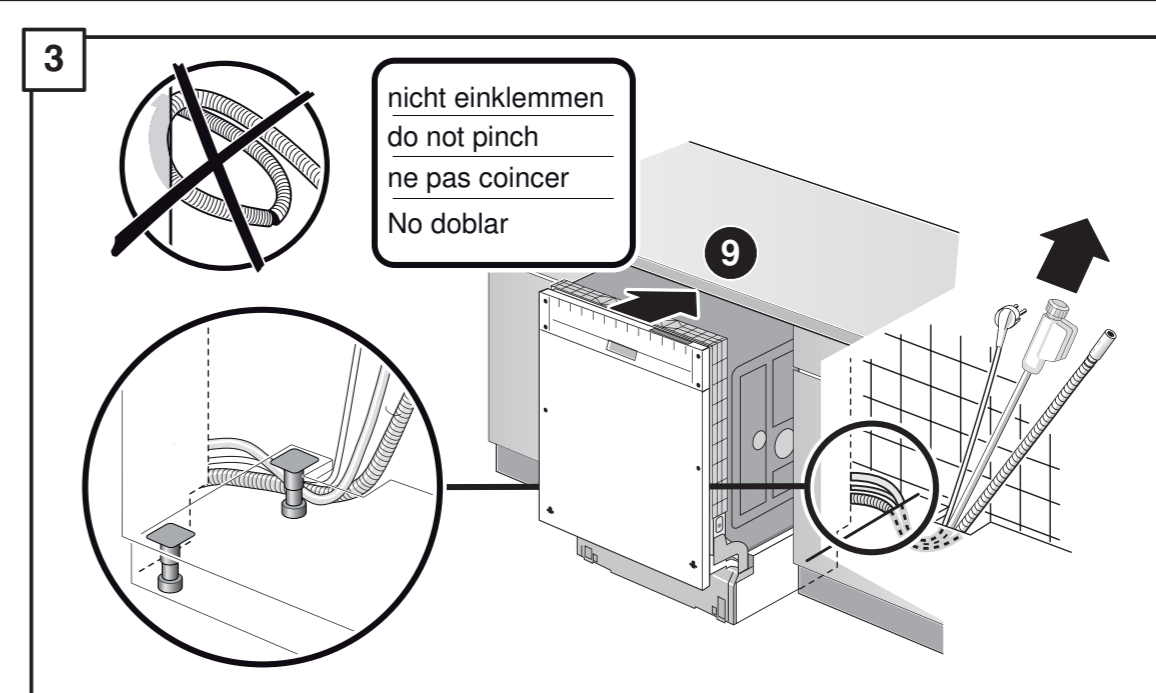
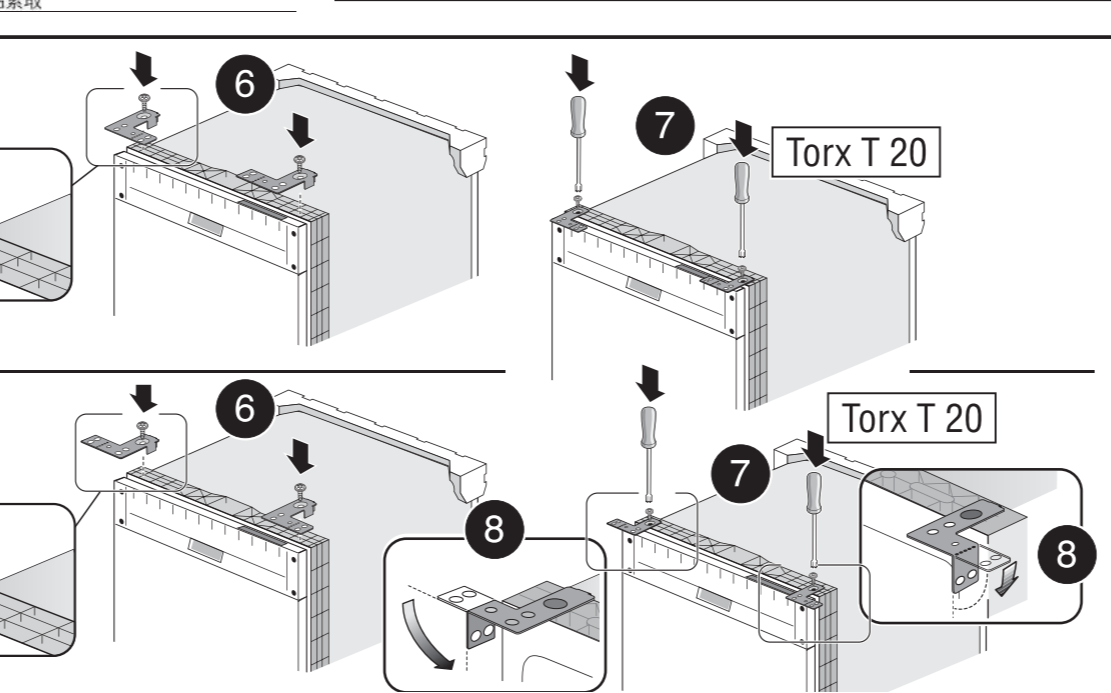
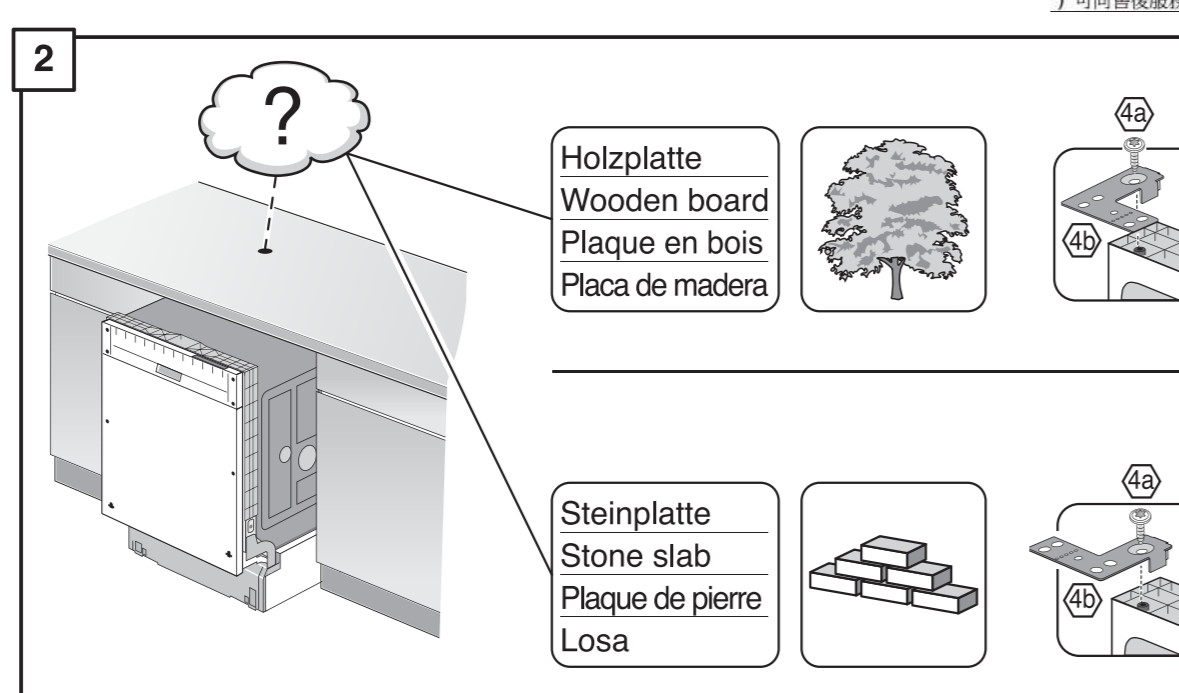
de Montageanleitung
 *) über Kundendienst erhältlich
fr Installation instructions
 *) Available from customer service
fr Notice de montage
 *) Disponible par le biais du service après-vente
nl Montagevoorschrift
 *) Eigen meerprijs bij de Servicedienst verkrijgbaar
it Istruzioni per il montaggio
 *) Disponibile presso il servizio assistenza clienti
es Instrucciones de montaje
 *) Se puede adquirir a través del Servicio de Asistencia Técnica Oficial de la marca
pt Instruções de montagem
 *) Pode ser adquirido nos nossos Serviços Técnicos
el Οδηγός τοποθέτησης
 *) Διαβιβάσιμο thru εμπειρογό τοποθέτη ρύθμιση ρυθμιζόμενων τιμών
ru Монтаж прибора
 *) Выккл сервис. Издателн алмалыр
sv Monteringsanvisning
 *) Kan fås via Service
no Monteringsanvisning
 *) Les hos kundeservice
de Monteringsvejledning
 *) Kan købes hos serviceafdelingen
fi Asennusohje
 *) Saatavissa huoltopalvelusta

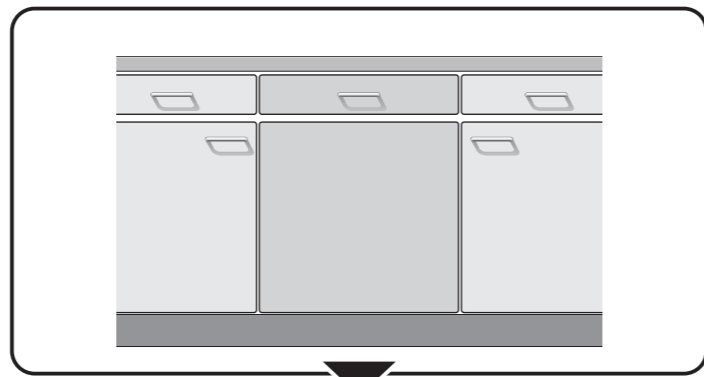
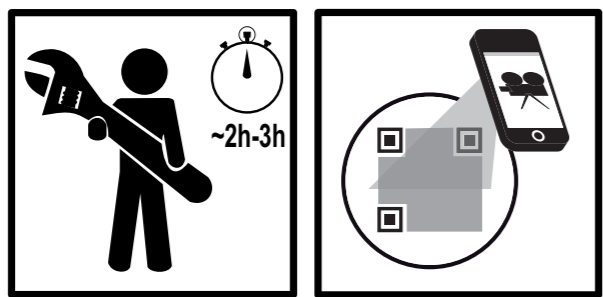
cs Montážní návod
 *) K dispozici přes servisní službu
sk Návod na montáž
 *) Dostanete v službe zákazníkom
pl Instrukcja montażu
 *) Do uzyskania w punkcie serwisowym
hu Szerelési utasítás
 *) A vevőszolgálaton keresztül kapható:
lv Instruksione de montāž
 *) Iegūstama šā servisa punktos
lt Montavimo instrukcija
 *) Išieškite pas klientų aptarnavimo servisą
uk Montážas pamācība
 *) Var saņemt servisa dienestā

ru Инструкция по монтажу
 *) Можно получить в сервисном центре
uk Інструкція з монтажу
 *) Можна отримати через сервісний центр
pl Instrukcja montażu
 *) Instrukcja montażu jest dostępna w punkcie serwisowym
hu Szerelési utasítás
 *) A vevőszolgálaton keresztül kapható:
lv Instruksione de montāž
 *) Iegūstama šā servisa punktos
lt Montavimo instrukcija
 *) Išieškite pas klientų aptarnavimo servisą
uk Montážas pamācība
 *) Var saņemt servisa dienestā



- 1 1,75 m
- 2 1,75 m
- 3 1,75 m
- 4 1,75 m
- 5 4x15
- 6 4x15
- 7 4x15
- 8 4x15
- 9 4x15
- 10 4x15
- 11 4x15
- 12 4x15
- 13 4x15
- 14 4x15
- 15 4x15
- 16 4x15
- 17 4x15
- 18 4x15
- 19 4x15
- 20 4x15
- 21 4x15
- 22 4x15
- 23 4x15
- 24 4x15
- 25 4x15
- 26 4x15
- 27 4x15
- 28 4x15
- 29 4x15
- 30 4x15
- 31 4x15





1

- 1 1,75 m
- 2 \varnothing 4x16
- 3 \varnothing 4x15
- 4 \varnothing 4x15
- 5 \varnothing 4x12
- 6 \varnothing 4x15
- 7 \varnothing 4x15
- 8 \varnothing 4x15
- 9 \varnothing 4x15
- 10 \varnothing 4x15
- 11 \varnothing 4x15
- 12

2

Holzplatte
Wooden board
Plaque en bois
Placa de madera

Steinplatte
Stone slab
Plaque de pierre
Losa

3

nicht einklemmen
do not pinch
ne pas coincer
No doblar

4

verspannen
brace
calar verticalment
Enrasar

5

6

7

8

Holzplatte
Wooden board
Plaque en bois
Placa de madera

Steinplatte
Stone slab
Plaque de pierre
Losa

9

10

Scheibe entfernen
remove disc
enlever le disque
Eliminar disco

max. 10 Nm

Dichtheit nach einem Spülgang prüfen.
Check for leaks after one wash cycle.
Vérifiez l'étanchéité après un lavage.
Verificar la estanqueidad tras un ciclo de lavado.

max. 4 m

2 m

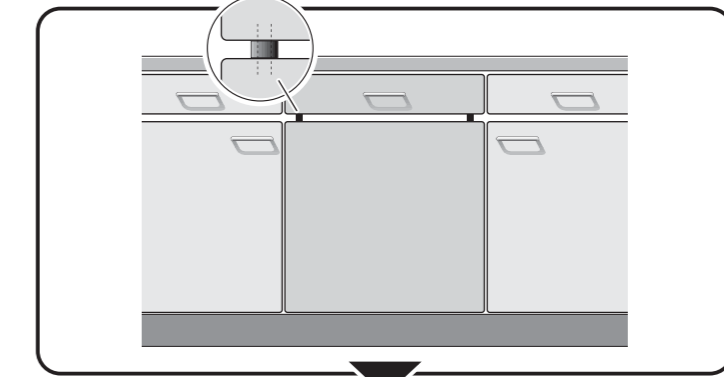
0,2 m

2,2 m

Mat.-Nr. 350564

3 m EU * Mat.-Nr. 644533

3 m GB * Mat.-Nr. 644534



1

4

5A

6A

7A

8

12

5A

6A

7A

8

